



Project Profile

The Delaney.

Knoxville, TN

REQUEST A QUOTE

REQUEST A REP

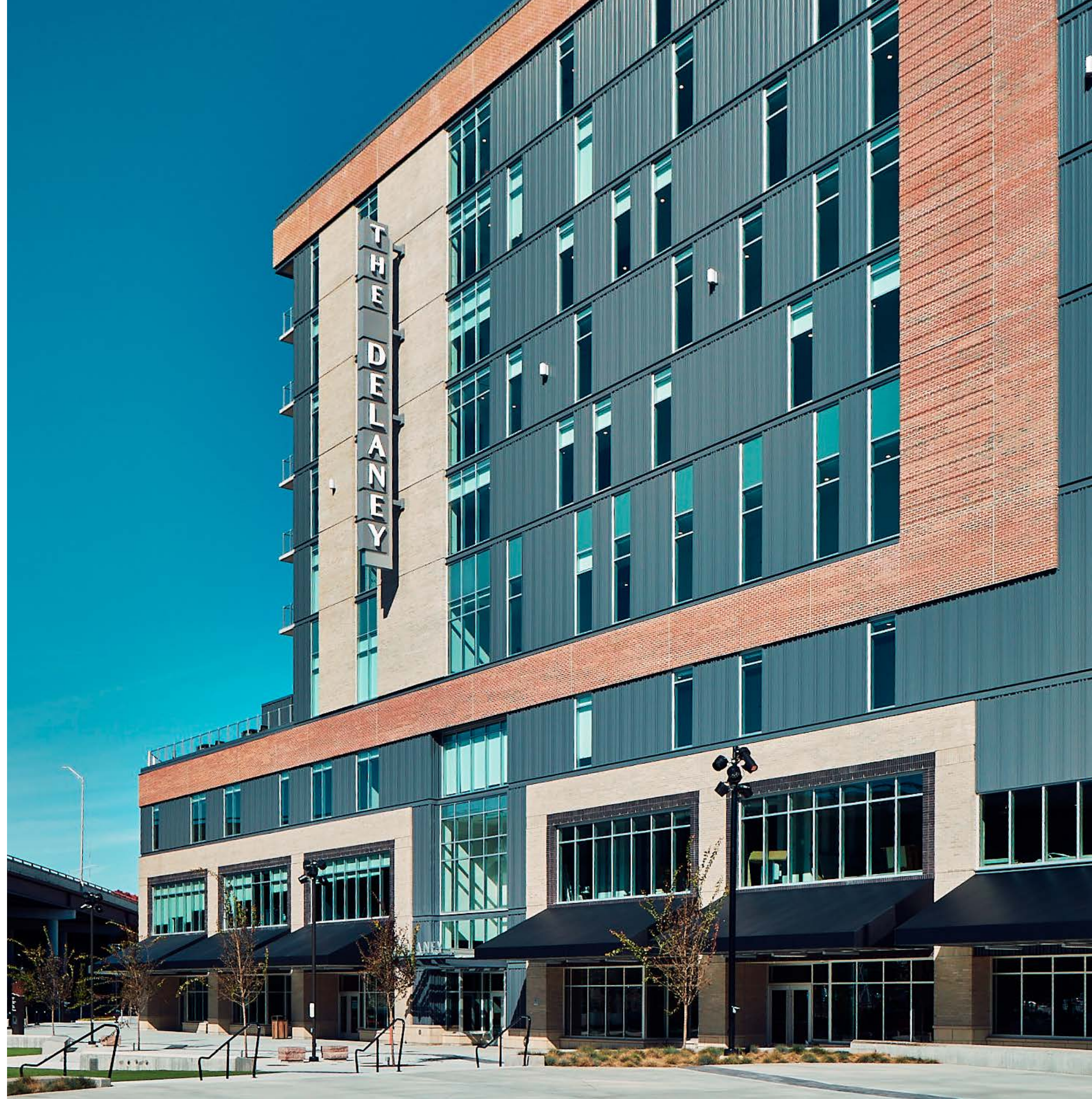
Commercial Roller Shades

inpro WT™

the **story**

The Delaney is a nine-story mixed-use development overlooking Covenant Health Park in Knoxville, Tennessee—home to the Knoxville Smokies baseball team and the One Knoxville SC soccer club. The first two floors feature retail and office space, with seven floors of luxury condominiums above, many offering direct views of the stadium district.

The project blends modern urban living with the energy of a growing entertainment hub. Its design required a combination of single and multi-banded manual clutch shade configurations that delivered both shade configurations that delivered both aesthetic consistency and reliable light control throughout the mixed-use spaces.



the project

Dealer: Window Covering Professionals
General Contractor: Denark Construction
Architectural Team: Design Innovation Architects
BarberMcMurry Architects

Inpro WT™ Products Used

Commercial Roller Shades

[VIEW PRODUCTS](#)

Common Areas, Amenity Spaces & Living Areas:

System: H200 SoloMount®
Manual Single and Multi-
Banded Clutch Shades

Fabric: WT 243-10
White | 3% Openness

Bedrooms:

System: H200 SoloMount®
Manual Single and Multi-
Banded Clutch Shades

Fabric: WT 772-10 White | Blackout



A photograph of a modern lounge interior. The room features large windows with 3% clutch shades, contemporary furniture including a large orange velvet sofa, several armchairs, and round coffee tables. The lighting is warm and ambient, with recessed ceiling lights and wall sconces. The overall aesthetic is clean and sophisticated.

● Single + Multi-Banded Clutch Shades - 3% Openness

the results

The Delaney's shading package delivers a cohesive, tailored solution that supports both the building's functional needs and its refined architectural design. The 3% screens keep common and living areas bright while controlling glare and preserving views, and the blackout shades provide comfort and privacy in the bedrooms.

Together, these polished, high-performing shading solutions elevate the property's luxury feel and reinforce The Delaney as a marquee development within Knoxville's rapidly growing stadium district.



obsessed with protecting buildings®

How they look. How they function.
And how they protect the health and safety
of the people who use them every day.

That's why we make hundreds of architectural
products all under one roof and work tirelessly to
make sure you and your buildings succeed.

Yeah, we are obsessed. But we wouldn't
have it any other way.

inpro-shades.com

877.294.3580

12830 Virkler Drive, Suite 500,
Charlotte, NC 28273

IPC® Door + Wall Protection
Ascend® Elevator Interiors
WT® Commercial Window Treatments
Clickeze® Privacy Systems
Endurant® Washroom Systems
SignScape® Architectural Signage
JointMaster® Expansion Joint Systems

©2025 Inpro Corporation

