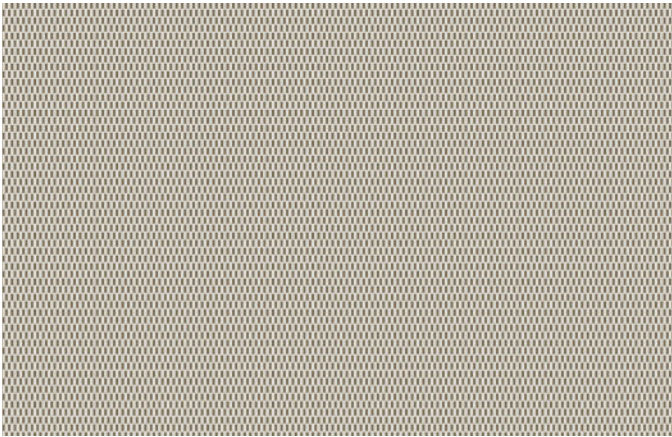




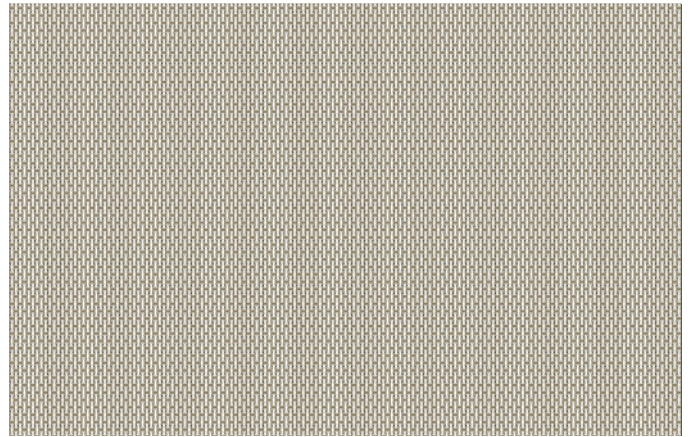
Commercial Window Treatments Shade Fabrics

WT 14X | <1% and 3% Openness



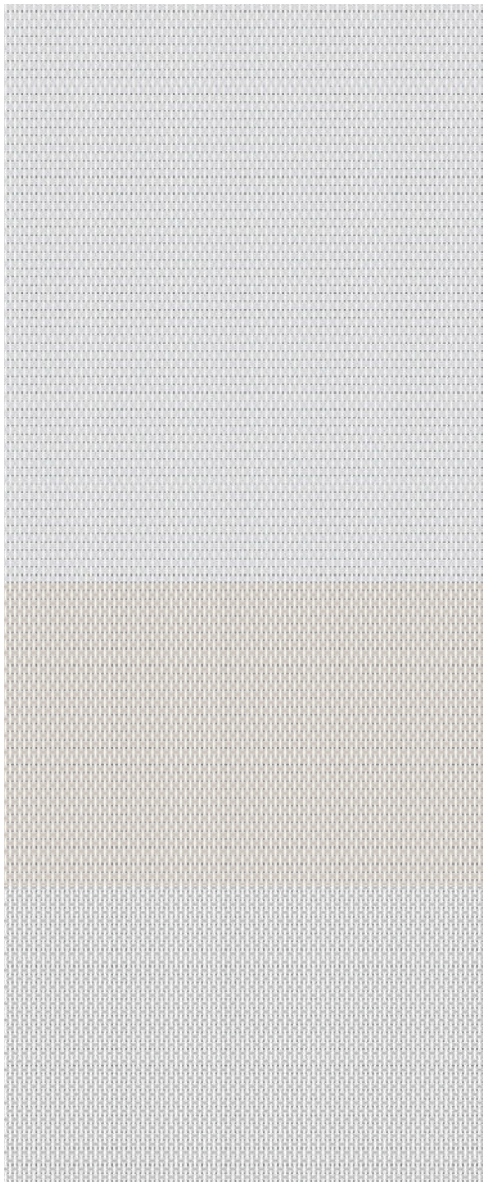
140.5 | <1%

-28 White/Sand Dune



143 | 3%

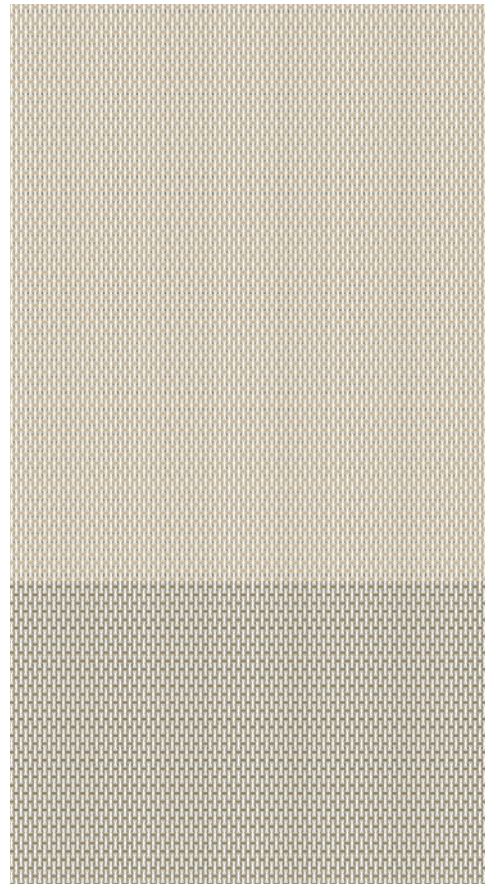
-28 White/Sand Dune



-10 White

-16 White/Eggshell

-18 White/Graystone



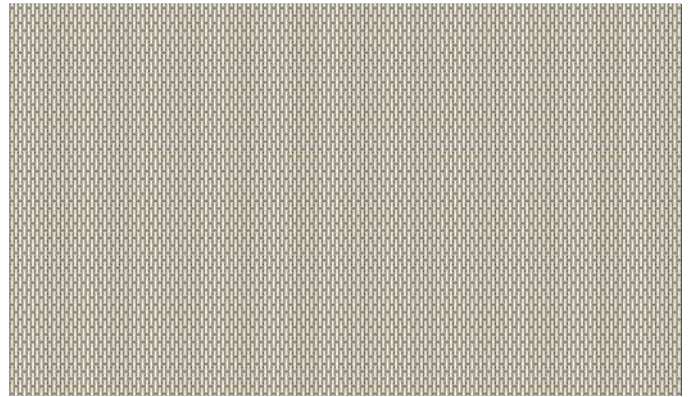
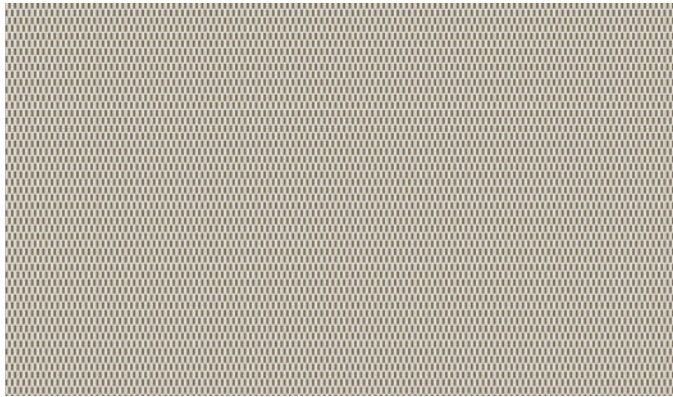
-12 White/Oatmeal

-28 White/
Sand Dune

Fabrics sampled in 3% Openness

Inpro WT™ Commercial Window Treatments

WT 14X | <1% and 3% Openness



WT 14X is a PVC-free, textured polyester roller shade fabric with two openness options: <1% for privacy and 3% for general use. Woven on advanced equipment, it's available in versatile tones, offering a timeless design that complements any interior while providing optimal light control and functionality.

Specifications and Certifications		
Fabric:	140.5	143
Width:	108"	
Composition:	100% Polyester	
Openness Factor:	<1%	3%
UV Blockage:	99%	97%
Weight (OZ/YD ²):	6.65	5.0
Thickness (IN):	0.022	0.021
Fire Classification:	NFPA 701:2023 (TEST METHOD 1); CAL TITLE 19	
Air Quality Certification:	GREENGUARD and GREENGUARD GOLD	
Lead-Free:	ASTM E1645/RoHS	
Environmental Certification:	OEKO-TEX 100	



Fabrics may vary slightly from colors of shown samples. Variances in fabric color are a normal part of fabric production as color mixtures may be slightly different from dye lot to dye lot. For documentation of test results and certificates please visit inpro-shades.com.

Additional Information: CA Prop 65 compliant; MA Ch 21A Sect 28 compliant; No intentionally added PFAS; HPD available.

For 8 x 10 memo samples of any of the fabrics featured on this card, please contact your Inpro WT™ Commercial Window Treatments Representative or visit inpro-shades.com.

CLEANING INSTRUCTIONS: 1) light vacuum, particularly with brush attachment (best for dirt and dust). 2) dab any dirty areas with a damp towel or sponge, let shade hang to dry (do not use soap or harmful cleaning agents on the fabric).

© Inpro Corporation

S80 W18766 Apollo Drive
Muskego, Wisconsin 53150 USA
inpro-shades.com
516.294.3580