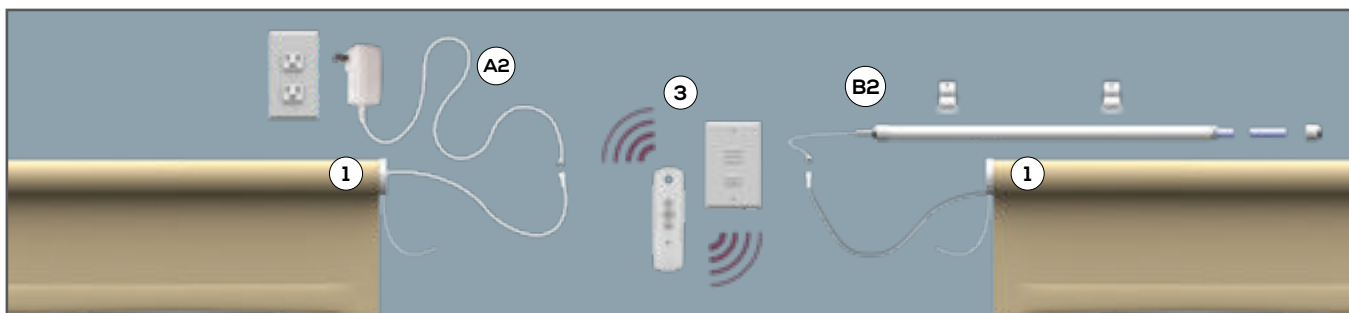


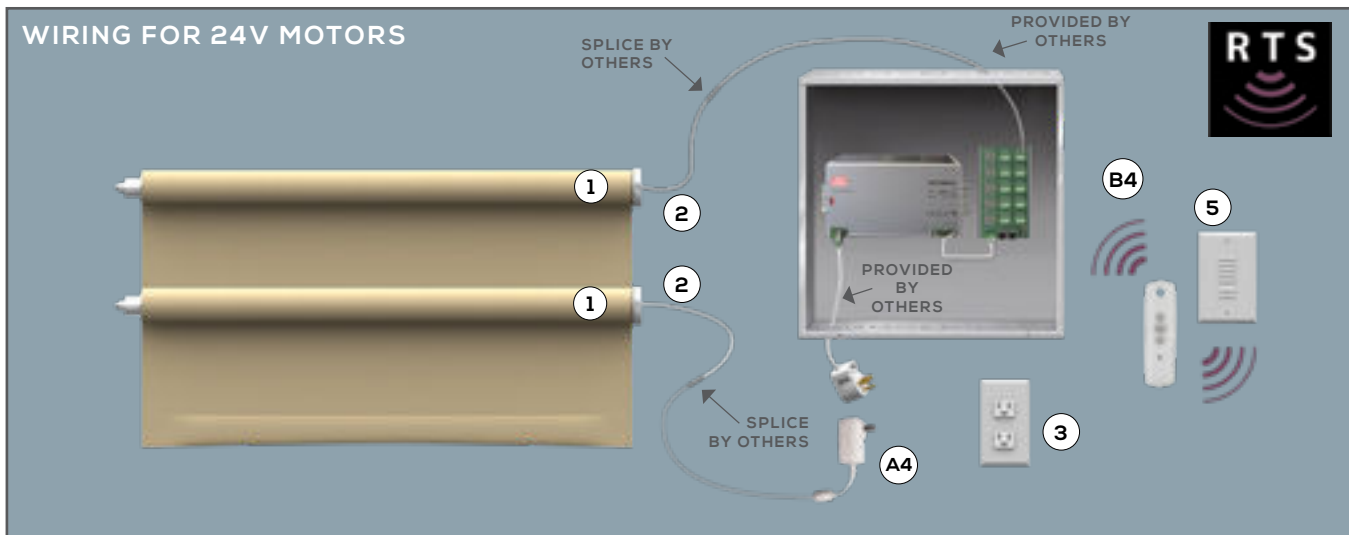
MotoRISE® RTS COMMUNICATION (LOW VOLTAGE)

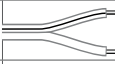
APPLIES TO MR150 SHADING SYSTEMS



ADDITIONAL INFORMATION		PART #
①	MotoRISE® SHADING SYSTEM ♦ Option for MotoRIse System Model MR150.	SEE MOTORISE SYSTEM DATA SHEETS FOR SHADING SYSTEM INFORMATION
REQUIRED FOR POWER: CHOOSE OPTION A OR B		
OPTION A FOR MBQ150RTS MOTOR: MOTOR WITH EMBEDDED RECHARGEABLE LITHIUM ION BATTERY (DEFAULT OPTION)		
A2	PLUG-IN CHARGER FOR SONESSE 30 WIREFREE MOTOR ♦ Required for recharging.	INCLUDED 1 PER ORDER: CACMBQ
OPTION B FOR MB150RTS MOTOR: MOTORS TO RELOADABLE BATTERY WAND		
B2	RELOADABLE BATTERY WAND KIT ♦ Includes (1) 18" reloadable Battery Wand, 8 AA Lithium Batteries, wiring and mounting brackets.	INCLUDED WITH MOTOR: BWS-RLD-WB
REQUIRED FOR CONTROL		
3	RTS CONTROLS ♦ At least one control is required for motors to operate.	MULTIPLE OPTIONS AVAILABLE. SEE "RTS CONTROLS" FOR ALL OPTIONS
SEE "RTS ADDITIONAL CONTROL OPTIONS" FOR MORE ADVANCED SYSTEM CONTROLS NOT SHOWN HERE.		

WIRING FOR 24V MOTORS



ADDITIONAL INFORMATION		PART #
①	MotoRISE® SHADING SYSTEM ♦ Option for MotoRIse System Model MR150.	SEE MOTORISE SYSTEM DATA SHEETS FOR SHADING SYSTEM INFORMATION
②	24V DC POWER CABLE  ♦ 2 Conductor ♦ 16 Gauge	INCLUDED WITH MOTOR: 7.5' LENGTH MLMDQ
③	AC POWER OUTLET ♦ 120 V	BY OTHERS (REQUIRED)
REQUIRED FOR POWER: CHOOSE OPTION A OR B		
OPTION A: MOTORS TO POWER OUTLET (DEFAULT OPTION)		
A4	24V DC SINGLE MOTOR POWER SUPPLY ♦ Attached lead is 5' (60")	INCLUDED WITH MOTOR: PS24MDQ
OPTION B: MOTORS TO POWER PANEL		
B4	24V DC POWER DISTRIBUTION PANEL ♦ 18" x 18" enclosure box contains 24V DC transformer, and distribution panel for 1-10 motors.	SOLD SEPARATELY: PDMDQ-10
REQUIRED FOR CONTROL		
5	RTS CONTROLS ♦ At least one control is required for motors to operate.	MULTIPLE OPTIONS AVAILABLE. SEE "RTS CONTROLS" FOR ALL OPTIONS
SEE "RTS ADDITIONAL CONTROL OPTIONS" FOR MORE ADVANCED SYSTEM CONTROLS NOT SHOWN HERE.		

For CAD wiring schematics for this system and others, please visit WTShade.com

LIMITATIONS MAY APPLY. SEE TERMS AND CONDITIONS AT WTSHADE.COM

V3 © 2019 WT SHADE C21



{T} 877.294.3580 • {F} 516.294.0444

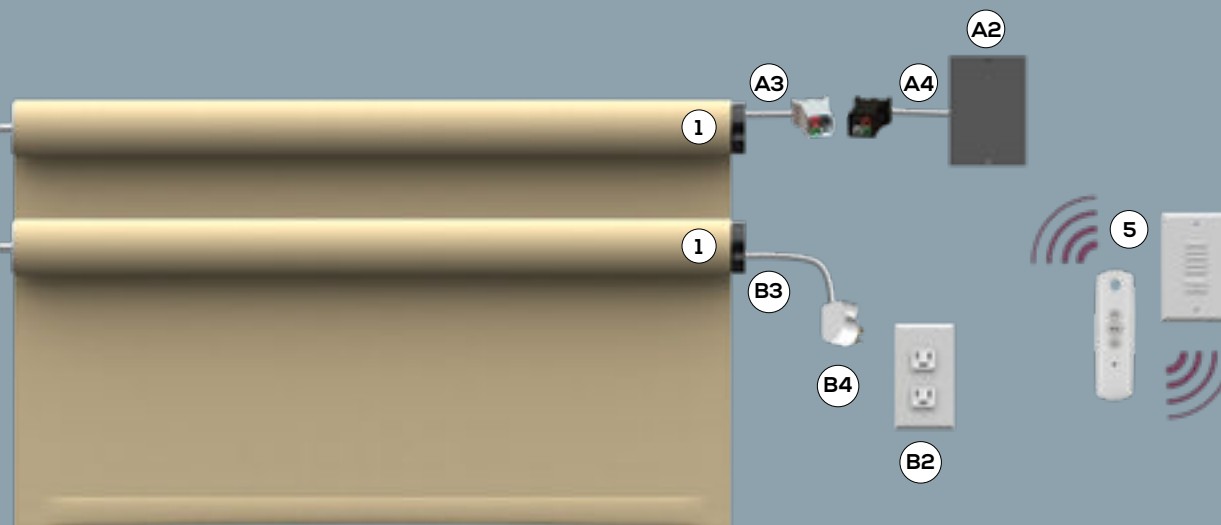
MOTORISE®

{E} info@WTShade.com • 77 Second Avenue • Garden City Park, New York 11040

MotoRISE® RTS COMMUNICATION (LINE VOLTAGE)

APPLIES TO MR250 & MR350 SHADING SYSTEMS

WIRING FOR 120V MOTORS



ADDITIONAL INFORMATION

PART

1	MotoRISE® SHADING SYSTEM	♦ Option for MotoRIse System Models MR250 & MR350	SEE MOTORISE SYSTEM DATA SHEETS FOR SHADING SYSTEM INFORMATION
---	--------------------------	---------------------------------------------------	----------------------------------------------------------------

REQUIRED FOR POWER: CHOOSE OPTION A OR B

OPTION A: MOTORS TO J-BOX (DEFAULT OPTION)

A2	J-BOX	♦ 120 V	BY OTHERS (REQUIRED)			
A3	120V AC MOTOR LEAD W/ MALE ANDERSON PLUG	♦ 3 Conductor RED = NOT USED BLACK = HOT WHITE = NEUTRAL GREEN = GROUND	INCLUDED WITH MOTOR: 1.25' LENGTH MLRTS-M/I-1.25		SOLD SEPARATELY: 3' LENGTH MLRTS-M/I-3	
A4	120V AC J-BOX LEAD** W/ FEMALE ANDERSON PLUG	RED = NOT USED BLACK = HOT WHITE = NEUTRAL GREEN = GROUND ♦ 4 Conductor 	INCLUDED WITH MOTOR: 5' LENGTH MLS-F/O-5	SOLD SEPARATELY: 10' LENGTH MLS-F/O-10	SOLD SEPARATELY: 15' LENGTH MLS-F/O-15	SOLD SEPARATELY: 25' LENGTH MLS-F/O-25

OPTION B: MOTORS TO POWER OUTLET

B2	AC POWER OUTLET	♦ 120 V	BY OTHERS (REQUIRED)			
B3	120V AC MOTOR LEAD NO CONNECTOR	 BLACK = HOT GREEN = GROUND WHITE = NEUTRAL ♦ 3 Conductor	SOLD SEPARATELY: 6' LENGTH MLRTS-I/O-6	SOLD SEPARATELY: 12' LENGTH MLRTS-I/O-12	SOLD SEPARATELY: 18' LENGTH MLRTS-I/O-18	SOLD SEPARATELY: 24' LENGTH MLRTS-I/O-24
B4	3 PRONG PLUG	♦ Use with any length MLRTS-I/O-X* to power one single motor directly from any power outlet. Ships unattached.	SOLD SEPARATELY: MP-RTS			

REQUIRED FOR CONTROL

5	RTS CONTROLS	♦ At least one control is required for motors to operate.	MULTIPLE OPTIONS AVAILABLE. SEE "RTS CONTROLS" FOR ALL OPTIONS
---	--------------	-----------------------------------------------------------	-------------------------------------------------------------------

SEE "RTS ADDITIONAL CONTROL OPTIONS" FOR MORE ADVANCED SYSTEM CONTROLS NOT SHOWN HERE.



*Replace "X" with desired length when ordering.

**Plenum rated cable available. Please contact WT Shade.

For CAD wiring schematics for this system and others, please visit WTShade.com

RTS FEATURES

- ◆ Completely wireless communication including the use of hand held remotes, wall switches, timers, and sensors.
- ◆ Available with 12V**, 24V, and 120V motor options.
- ◆ Integrate with most Automation Systems through RS232, RS485, or Dry Contact (requires interface).
- ◆ Simple electrical wiring.
- ◆ Multichannel capabilities.
- ◆ Control all motors individually and/or by groups with one or many controllers.
- ◆ Up to 65' range between motor and wireless control.
- ◆ Rolling radio code for reduced interference with other radio products. (Radio Frequency: 433.42MHz)
- ◆ Electronic Limit Setting and simple programming.



5 RTS CONTROLS Select at least one. Each sold separately.

BASIC CONTROL OPTIONS (REQUIRED FOR CONTROL & PROGRAMMING)



TELIS HAND-HELD REMOTE CONTROL

- ◆ Available in White (-10), Silver (-20), and Black (-90).

1 CHANNEL
RFX1-XX*

5 CHANNEL
RFX5-XX*



DECOFLEX WIRELESS WALL SWITCH

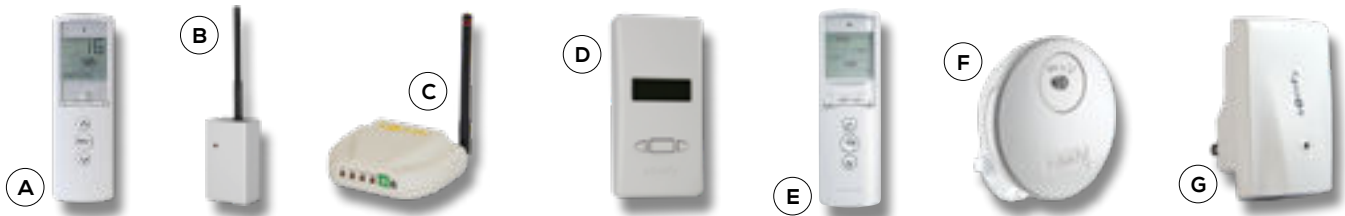
- ◆ Switch Plates included.
- ◆ Available in White (-10), Ivory (-04), and Black (-90).
- ◆ Preprinted or custom engraved buttons available.

1 CHANNEL
RFW1-XX*

5 CHANNEL
RFW5-XX*

RTS ADDITIONAL CONTROL OPTIONS Optional. Each sold separately.

(A)	TELIS 16 REMOTE CONTROL	<ul style="list-style-type: none">◆ Available in White (-10), and Silver (-20).◆ Digital on-screen display for 16 Channel control.	RFX16-XX*
(B)	RTS REPEATER	<ul style="list-style-type: none">◆ Use to extend RTS signal or bypass interference.◆ No programming required.◆ One per installation.	RTSREP
(C)	UNIVERSAL RTS INTERFACE	<ul style="list-style-type: none">◆ 16 Channels.◆ Enable control of RTS motors through 3rd party control systems through RS232 or RS485.	AVURTSI
(D)	RTS TO Z-WAVE INTERFACE	<ul style="list-style-type: none">◆ 16 Channels.◆ Enable control of RTS motors through 3rd party control systems using Z-Wave.	AVZRTSI
(E)	TELIS 1 CHRONIS TIMER	<ul style="list-style-type: none">◆ Allows one scheduled open and one close function per day with different scheduled operations for weekends and weekdays.◆ Available in White (-10), or Silver (-20).	RFTMI-XX*
(F)	SUN & TEMP SENSOR	<ul style="list-style-type: none">◆ Allows for automatic operation based on levels of sunlight or temperature of the room.◆ For indoor use only.	SUNRTS-INT
(G)	SOMFY myLink™	<ul style="list-style-type: none">◆ Adds control for up to 5 RTS channels from iOS and Android devices.◆ Allows for the creation of scenes along with timed or scheduled events.◆ Remote access.	AVWIFI
N/A	DRY CONTACT RTS INTERFACE	<ul style="list-style-type: none">◆ Use to integrate with automation or building management systems through dry contact.◆ For indoor use only.	AVIDCT



*Replace "XX" with desired color number when ordering.
**Battery powered.