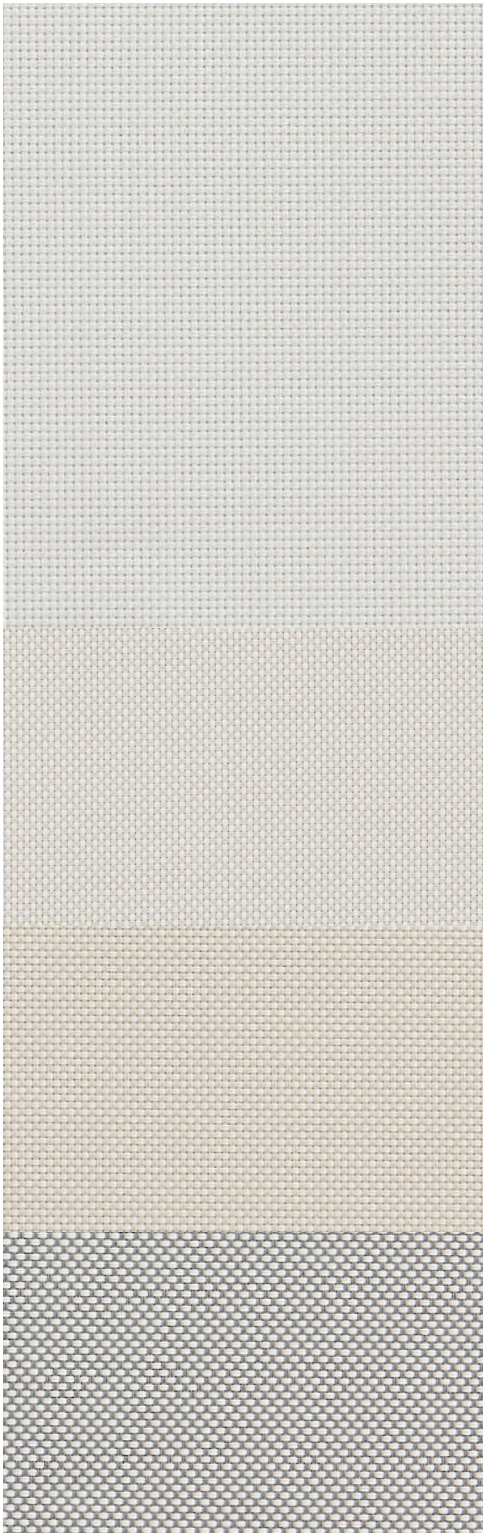




**WT Shade®**  
**Commercial Window Treatments**  
245B | 0% Openness

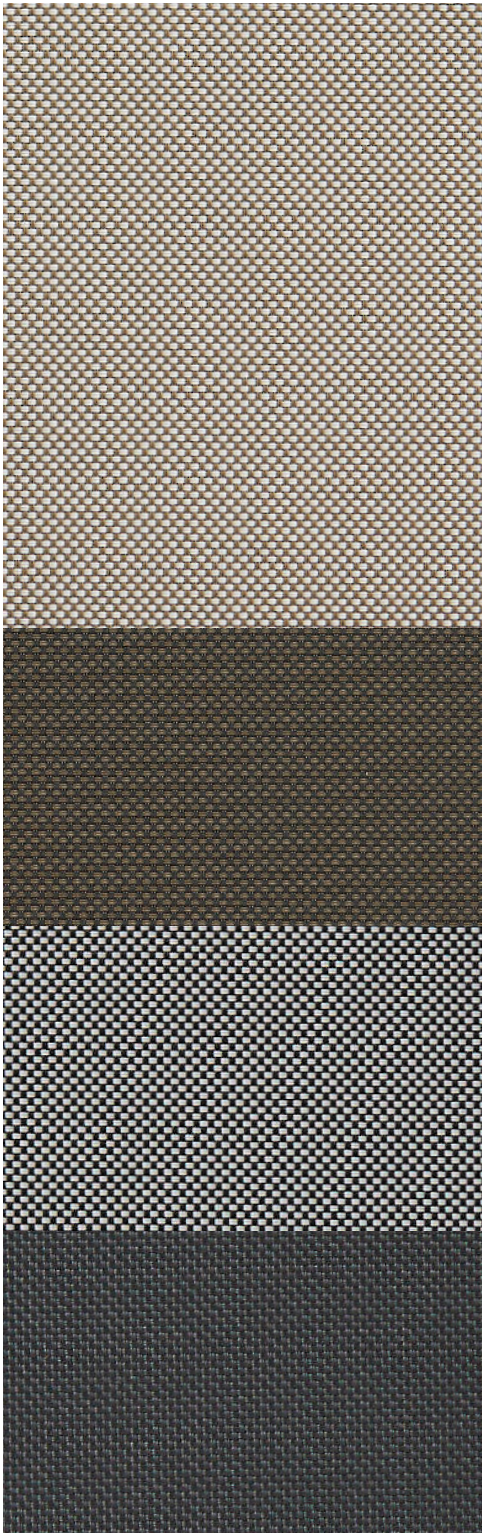


-10 White

-16 White/Haze

-12 White/Sand

-18 White/Grey



-38 Sand/Mocha

-57 French Roast

-89 Grey/Black

-90 Black

# WT Shade® Commercial Window Treatments

## 245B | 0% Openness

Coordinating blackout and solar screen fabric matches can be challenging, but our WT 245B Blackout fabric provides a perfect match to our most popular 24X fabric series. The robust 2x2 basket weave is coated with a durable acrylic backing, and is an ideal solution for areas requiring maximum privacy and light blockage.

Specifications and Certifications	
Width:	118"
Composition:	22% Polyester/ 78% PVC with White Acrylic Coating
Openness Factor:	0%
UV Blockage:	100%
Weight (OZ/YD²):	18.27
Thickness (IN):	0.027
Fire Classification:	NFPA 701:2015 (TEST METHOD 1)
Air Quality Certification:	GREENGUARD and GREENGUARD GOLD
Lead-Free:	ASTM 1645-16 AND E1613-12
Antimicrobial:	ASTM G21, ASTM E2180
Environmental Certification:	OEKO-TEX 100



Fabrics may vary slightly from colors of shown samples. Variances in fabric color are a normal part of fabric production as color mixtures may be slightly different from dye lot to dye lot.

For documentation of test results and certificates please visit [inpro.com/wtshade](http://inpro.com/wtshade).

**For 8 x 10 memo samples of any of the fabrics featured on this card, please contact your WT Shade representative or visit [inpro.com/wtshade](http://inpro.com/wtshade).**

**CLEANING INSTRUCTIONS:** Regular dusting and vacuuming recommended. For more thorough cleaning, use mild detergent and water, then rinse with water and allow to air dry. Spot test any cleaners before use. Do not bleach. Professional cleaning recommended.

© Inpro Corporation

S80 W18766 Apollo Drive  
Muskego, Wisconsin 53150 USA  
[inpro.com/wtshade](http://inpro.com/wtshade)  
877.294.3580